

Institute of Industrial and Computer Management and Research ,Nigdi

Criterion II – Teaching–Learning and Evaluation

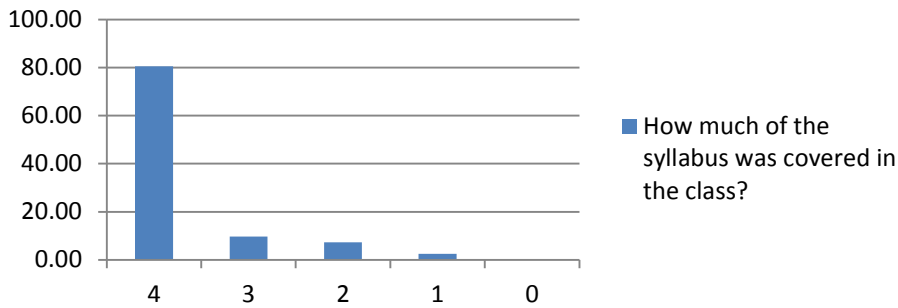
Student Satisfaction Survey on Teaching Learning Process

Sr.No	Question	Number of Students				
		4	3	2	1	0
1	How much of the syllabus was covered in the class?	80.50	9.70	7.30	2.50	0.00
2	How well did the teachers prepare for the classes?	81.20	13.80	3.50	1.50	0.00
3	How well were the teachers able to communicate?	76.30	20.63	2.58	0.49	0.00
4	The teacher's approach to teaching can best be described as	78.56	18.56	2.50	0.38	0.00
5	Fairness of the internal evaluation process by the teachers	72.00	20.36	2.30	5.34	0.00
6	Was your performance in assignments discussed with you?	68.23	20.32	7.50	3.95	0.00
7	The institute takes active interest in promoting internship, student exchange, field visit opportunities for students	76.53	18.26	4.23	0.98	0.00
8	The teaching and mentoring process in your institution facilitates you in cognitive, social and emotional growth.	65.00	23.65	9.33	2.02	0.00
9	The institution provides multiple opportunities to learn and grow.	74.00	12.56	12.30	1.14	0.00
10	Teachers inform you about your expected competencies, course outcomes and programme outcomes.	78.12	12.36	6.53	2.99	0.00
11	Your mentor does a necessary follow-up with an assigned task to you.	81.23	12.00	5.00	1.77	0.00
12	The teachers illustrate the concepts through examples and applications.	76.00	16.33	6.31	1.36	0.00
13	The teachers identify your strengths and encourage you with providing right level of challenges.	72.65	18.00	8.00	1.35	0.00
14	Teachers are able to identify your weaknesses and help you to overcome them.	74.63	15.23	9.87	0.27	0.00
15	The institution makes effort to engage students in the monitoring, review and continuous quality improvement of the teaching learning process.	84.33	11.25	4.00	0.42	0.00
16	The institute/ teachers use student centric methods, such as experiential learning, participative learning and problem solving methodologies for enhancing learning experiences.	76.35	16.65	7.00	0.00	0.00
17	Teachers encourage you to participate in extracurricular activities.	66.33	20.24	12.33	1.10	0.00
18	Efforts are made by the institute/ teachers to inculcate soft skills, life skills and employability skills to make you ready for the world of work.	75.23	14.23	10.54	0.00	0.00
19	What percentage of teachers use ICT tools such as LCD projector, Multimedia, etc. while teaching.	87.37	10.22	2.33	0.08	0.00
20	The overall quality of teaching-learning process in your institute is very good.	80.00	15.00	3.55	1.45	0.00

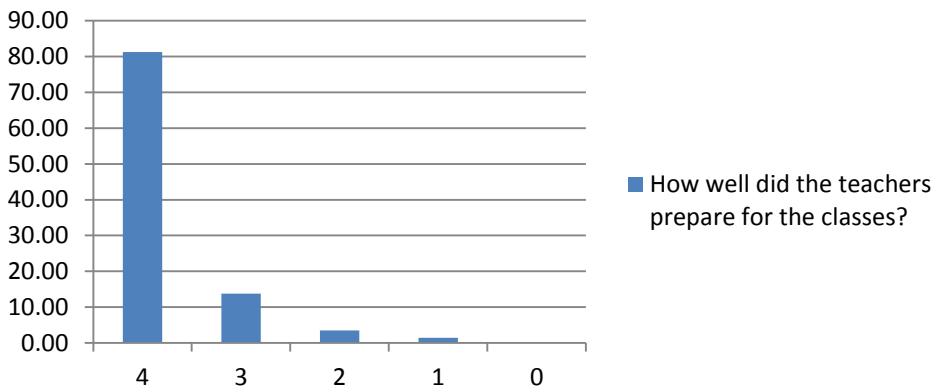



 Dr. Abhay Kulkarni
 Director
DIRECTOR
Institute of Industrial & Computer
Management & Research [I.I.C.M.R.]
 Nigdi, Pune - 411 044

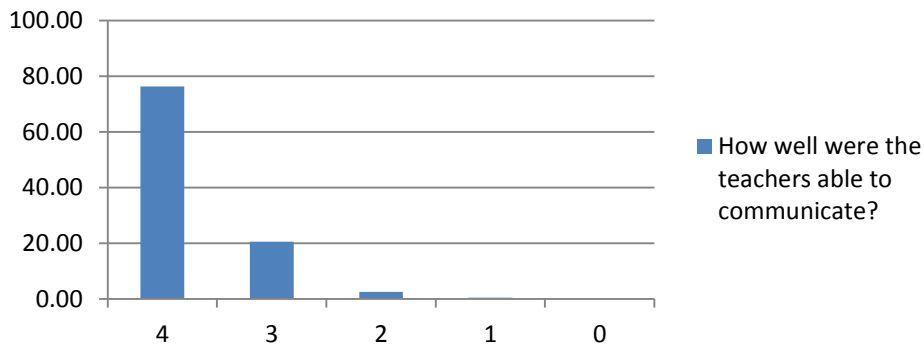
1. How much of the syllabus was covered in the class?



2. How well did the teachers prepare for the classes?

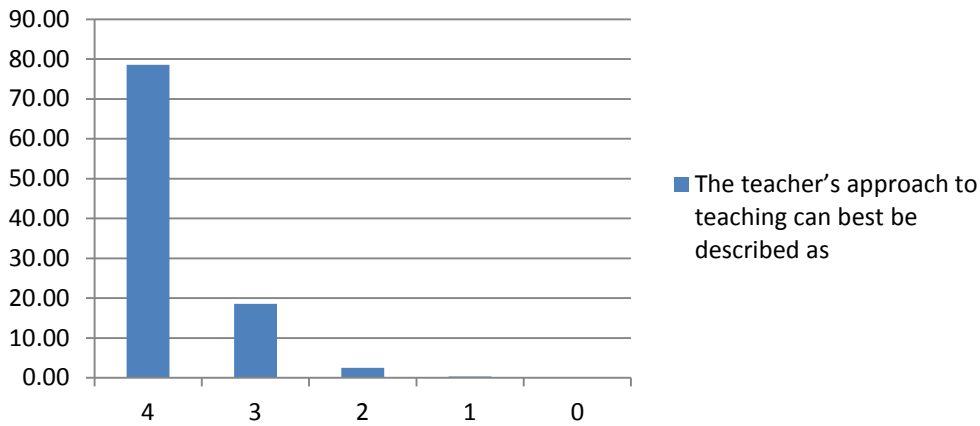


3. How well were the teachers able to communicate?

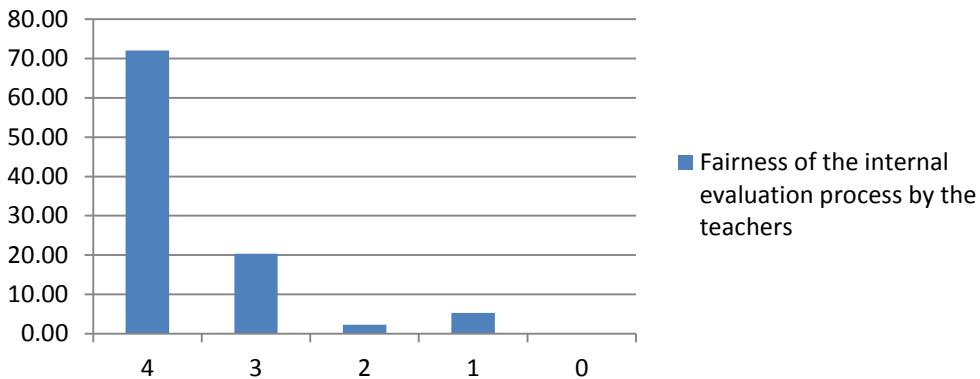


Abhay Kulkarni
Dr. Abhay Kulkarni
Director
DIRECTOR
Institute of Industrial & Computer
Management & Research [I.I.C.M.R.]
Nigdi, Pune - 411 044

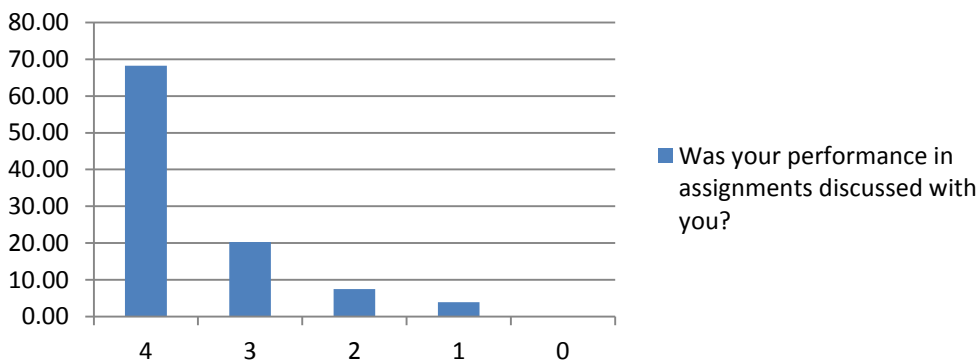
4. The teacher's approach to teaching can best be described as



5. Fairness of the internal evaluation process by the teachers

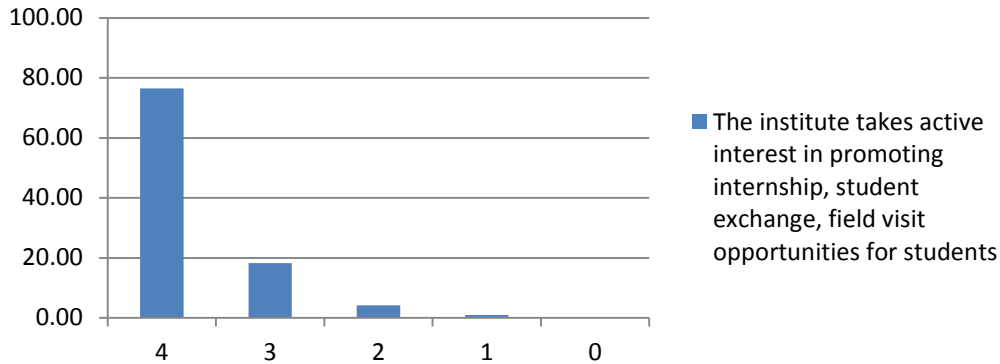


6. Was your performance in assignments discussed with you?

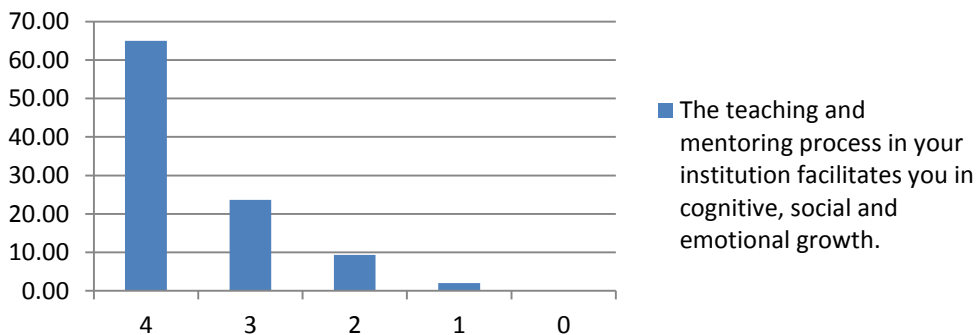


Abhay Kulkarni
Dr. Abhay Kulkarni
Director
DIRECTOR
Institute of Industrial & Computer
Management & Research [I.I.C.M.R.]
Nigdi, Pune - 411 044

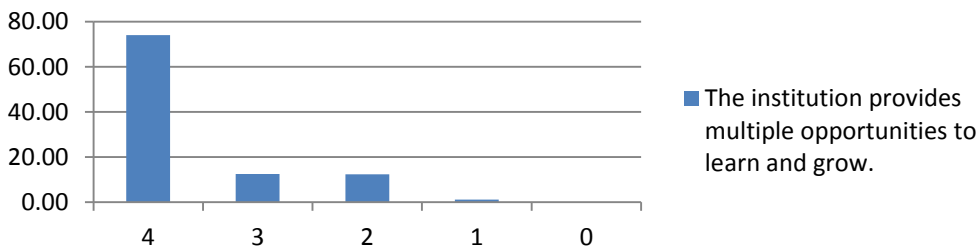
7. The institute takes active interest in promoting internship, student exchange, field visit opportunities for students



8. The teaching and mentoring process in your institution facilitates you in cognitive, social and emotional growth.

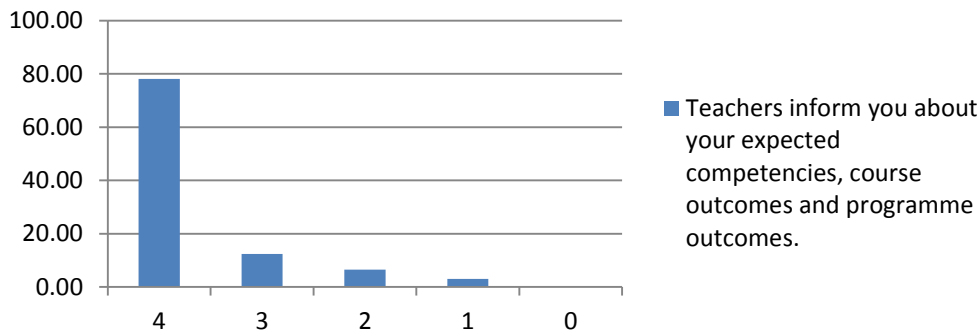


9. The institution provides multiple opportunities to learn and grow.

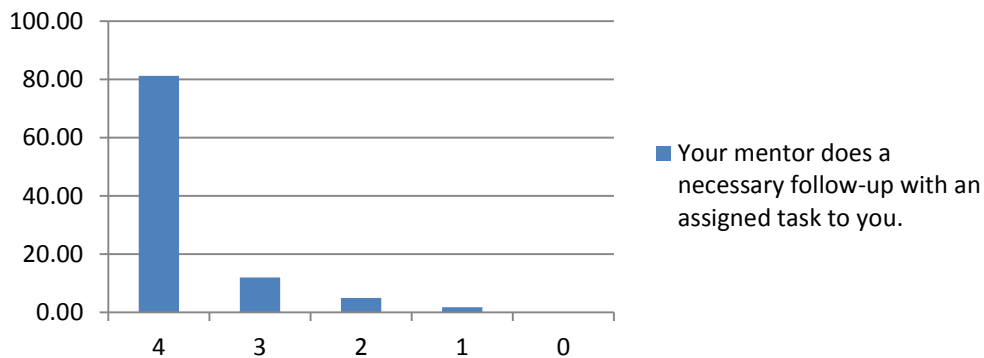



 Dr. Abhay Kulkarni
 Director
DIRECTOR
Institute of Industrial & Computer Management & Research (I.I.C.M.R.)
 Nigdi, Pune - 411 044

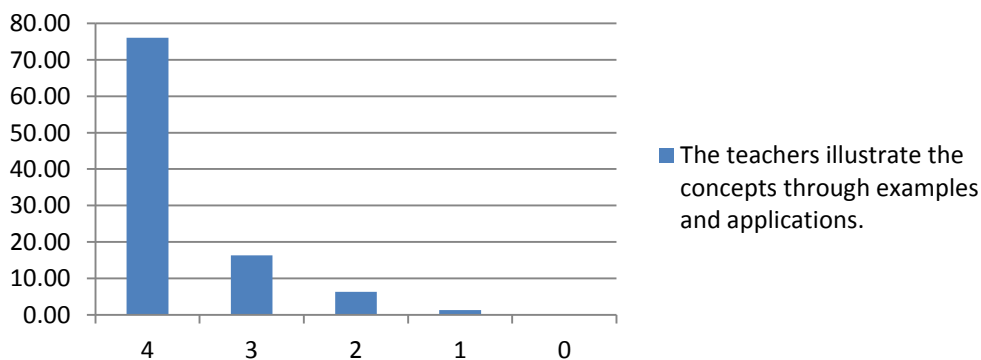
10. Teachers inform you about your expected competencies, course outcomes and programme outcomes.



11. Your mentor does a necessary follow-up with an assigned task to you.

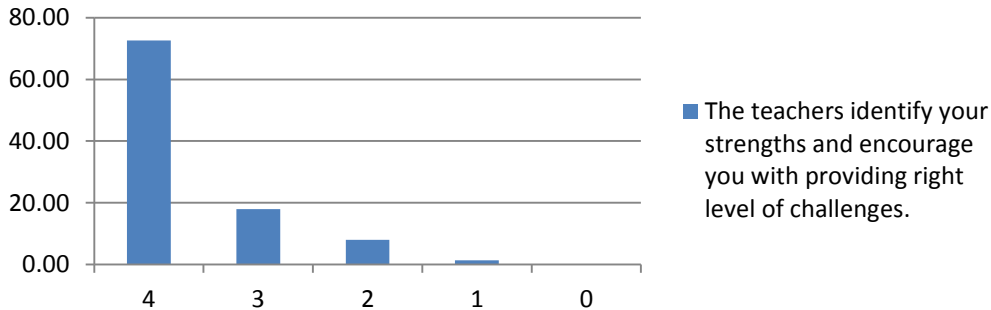


12. The teachers illustrate the concepts through examples and applications.

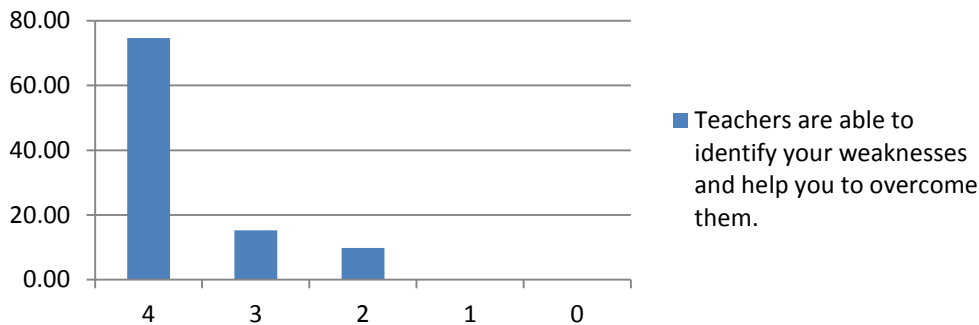



Dr. Abhay Kulkarni
Director
DIRECTOR
Institute of Industrial & Computer
Management & Research (I.I.C.M.R.)
Nigdi, Pune - 411 044

13. The teachers identify your strengths and encourage you with providing right level of challenges.

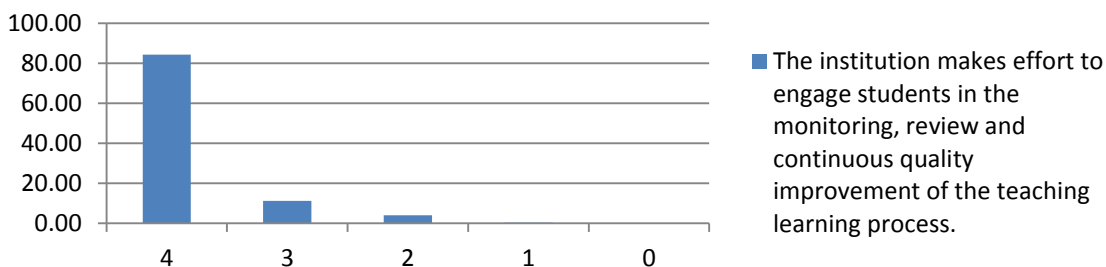


14. Teachers are able to identify your weaknesses and help you to overcome them.

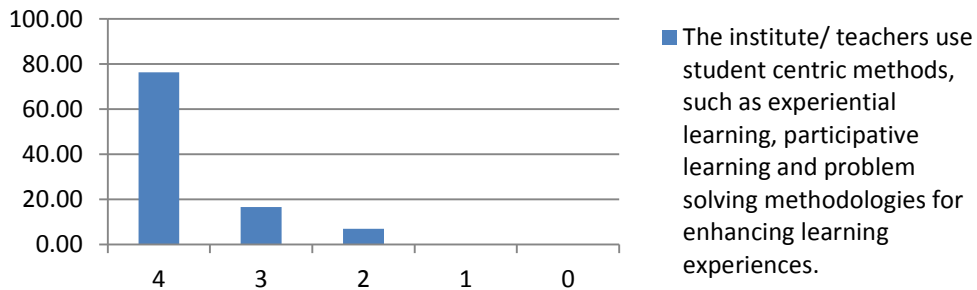


Abhay Kulkarni
 Dr. Abhay Kulkarni
 Director
DIRECTOR
Institute of Industrial & Computer Management & Research (I.I.C.M.R.)
 Nigdi, Pune - 411 044

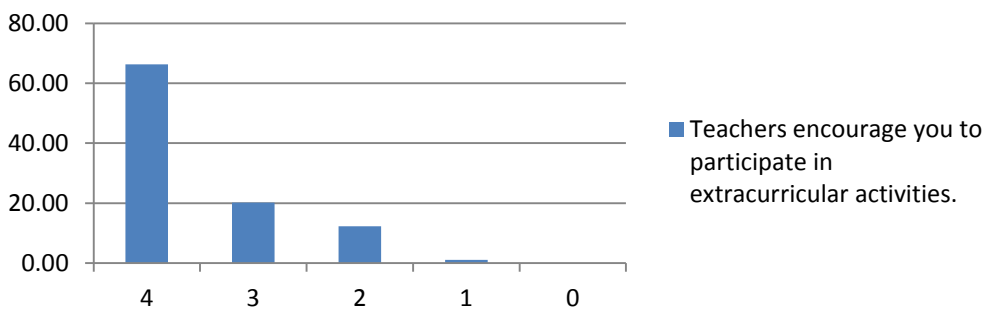
15. The institution makes effort to engage students in the monitoring, review and continuous quality improvement of the teaching learning process.



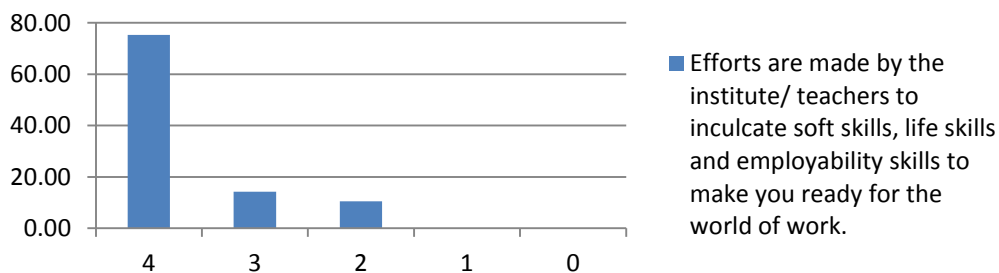
16. The institute/ teachers use student centric methods, such as experiential learning, participative learning and problem solving methodologies for enhancing learning experiences.



17. Teachers encourage you to participate in extracurricular activities.

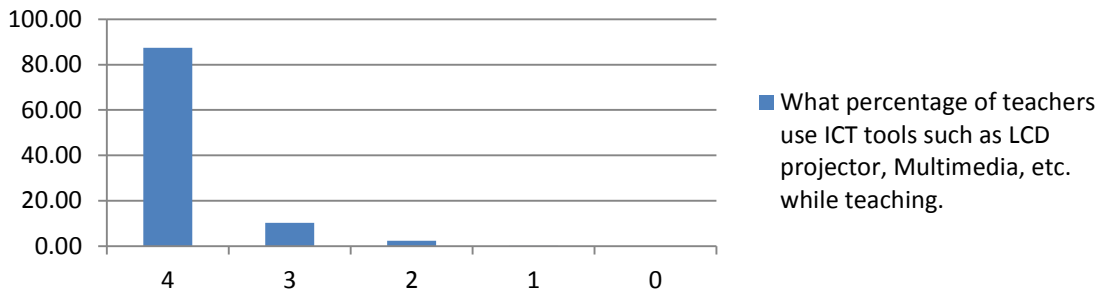


18. Efforts are made by the institute/ teachers to inculcate soft skills, life skills and employability skills to make you ready for the world of work.

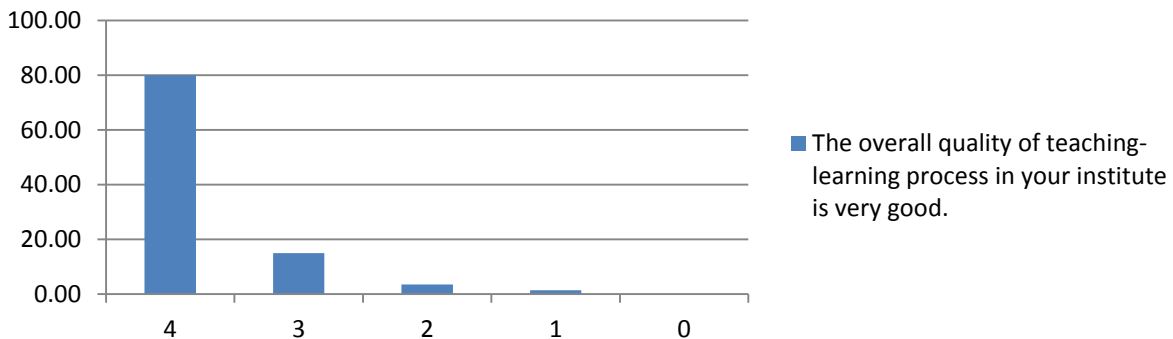


Dr. Abhay Kulkarni
 Dr. Abhay Kulkarni
 Director
DIRECTOR
Institute of Industrial & Computer Management & Research [I.I.C.M.R.]
 Nigdi, Pune - 411 044

19 . What percentage of teachers use ICT tools such as LCD projector, Multimedia, etc. while teaching.



20. The overall quality of teaching-learning process in your institute is very good.



Abhay Kulkarni
 Dr. Abhay Kulkarni
 Director
DIRECTOR
Institute of Industrial & Computer
Management & Research [I.I.C.M.R.]
 Nigdi, Pune - 411 044

